

Biometric Technology

# VIRDI



Scan QR code  
[www.virditech.com](http://www.virditech.com)



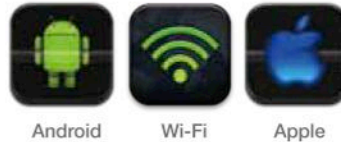
# VIRDI Smart Access

Convergence of Biometric Access Control & Smart Phone Technology



**AC-F100**

## 3S Concept Smart, Slim, Simple



## Remote Access via DDNS

### Key features

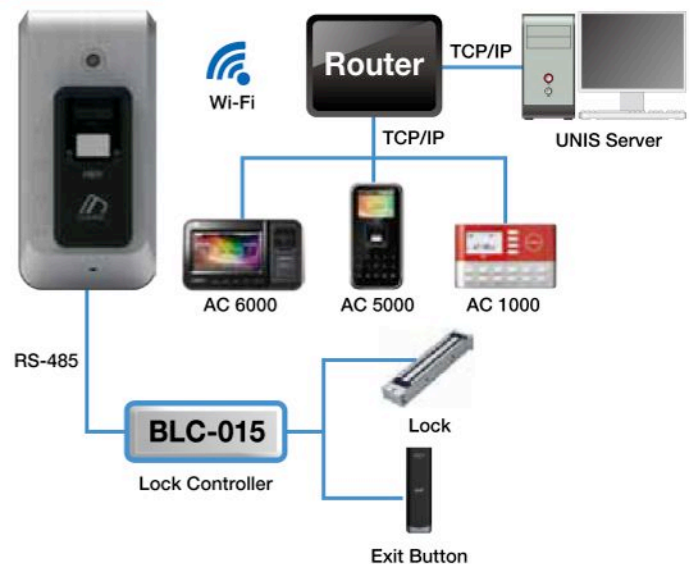
- IP65 Rating, Die- Cast Aluminum
- Patented Fake Finger Detection
- Camera : 1.3M Pixel
- User Capacity : 1,000 User (1,000 Finger)
- Log Capacity : 1,000,000 Logs

### System Configuration

#### Stand Alone



#### Network



# VIRDI AC-6000



VIRDI AC-6000

## Key features

### VIRDI AC-6000

- Patented Fake Finger Detection
- User Capacity 100,000 (100,000Finger)
- Log Capacity 500,000
- Image Log Capacity 12,500
- 1.3M Pixel Camera Embedded
- 4.8" Color TFT Touch Screen
- Card Reader Option:  
125KHz EM, 13.56MHz Mifare / DESFire, HID Prox 125KHz
- TCP/IP, WiFi(Optional), RS232, RS485, Wiegand
- USB Memory Slot
- 32 Bit RISC 806MHz CPU
- 256MB Flash & 256MB DDR SDRAM
- 1:1 < 0.5 sec
- 1:N < 1 sec (1:7,000)
- Max 1:N up to 30,000 users
- Doorphone Interface for Visitor Management

# VIRDI AC-5000



VIRDI AC-5000

### VIRDI AC-5000

- Patented Fake Finger Detection
- User Capacity 20,000 (20,000Finger)
- Log Capacity 61,000
- 2.8" Color TFT LCD
- Card Reader Option :  
125KHz EM, 13.56MHz Mifare / DESFire, HID Prox 125KHz
- TCP/IP, RS232, RS485, Wiegand
- POE 13W support
- IP65 Weatherproof Certified
- 32 Bit RISC 400MHz CPU
- Max 1:N up to 20,000 users
- Optional Slave reader (SR 100FP) with local antipassback

# VIRDI AC-4000



Winner of NPS award  
in 2007 ISC West



VIRDI AC-4000

## Key features

### VIRDI AC-4000

- Patented Fake Finger Detection
- 2007 ISC West NPS Product Achievement Award
- Embedded Fake Finger Detection
- User Capacity 22,000 (22,000 Finger)
- Log Capacity 55,000
- Card Reader Option : 125KHz EM, 13.56MHz Mifare / DESFire, HID Prox 125KHz
- TCP/IP, RS232, RS485, Wiegand
- Doorphone Interface for Visitor Management
- Optional Slave reader (SR 100FP) with local antipassback

# VIRDI AC-2100



VIRDI AC-2100

### VIRDI AC-2100

- Patented Fake Finger Detection
- User Capacity 100 (200 Finger)
- Log Capacity 5,000
- Card Reader Option: 125KHz EM, 13.56MHz Mifare / DESFire
- IPX3 Weatherproof Certified
- TCP/IP, WiFi(Optional), RS232, RS485, Wiegand
- Optional Slave reader (SR 100FP) with local antipassback



# VIRDI SR-100FP



VIRDI SR-100FP

# VIRDI FOH02



VIRDI FOH02

## Key features

### VIRDI SR-100FP

- Patented Fake Finger Detection
- Anti-Pass Back (RS-485)
- 125KHz EM, 13.56MHz Mifare / DESFire
- Compatible with : AC 2100(V3.0), AC 4000, AC 5000

### VIRDI FOH02

- Patented Fake Finger Detection
- 500dpi Durable Optical Sensor
- 256 Grayscale
- Image Size 304 x 344 pixels
- Sensing Area 15 x 17mm
- Windows Size 16 x 19.6
- O/S MS Windows
- Plug & Play USB2.0
- Card Option: 125KHz EM, 13.56MHz Mifare / DESFire
- FVC Top Ranking Algorithm as of Dec 2011
- NIST Certified Template Format (ANSI-378 / ISO19794-2)
- WSQ Standard Image Compression
- VIRDI UCBio SDK (VB, Visual C++, C#, VB.NET, Java)

# VIRDI UNIS Software

## Access Control Software Features

- Real-Time Monitoring – Terminals use Push Technology
- Optional Integrated Time & Attendance Module
- Optional Integrated Meal Management Module
- Unlimited Users
- Device Configuration and Management
- Time Zones – Up to 12 transaction bands (start and end times) for each day
- Access Times
- Custom Access Areas
- Define Access Groups
- Access Group Scheduling
- Anti-Pass Back
- Admin Authority Management
- Records Transactions and Events
- Automatic Email System Alarms / Events
- Smart Card Layout Configuration
- Terminal Management
  - 1) Auto Detect Terminals
  - 2) Configure Common Terminal Settings
  - 3) Define Wiegand IN&OUT Interface Protocol
  - 4) Setup Siren Times  
(used to ring a bell or siren to indicate start or end of work)
- Flexible Template Management and Enrollment
- Flexible Data Selection
- Save to .CSV file
- Blacklist User Management
- Message Broadcast Facility
- Displays Real-Time Alerts on User Defined Site Diagrams

## T&A Software Features

- UNIS T&A is a Module of UNIS and shares a Common Database (USB Dongle Required)
- Shifts Config
  - 1) Limited to 99 shifts
  - 2) Each shift has a start and end time
  - 3) Define when an employee is late or leaves early
  - 4) Multiple shifts can be worked on 1 day
  - 5) A shift can have up to 5 breaks per day
  - 6) A shift can commence on the previous day (paid on day OUT) or end on the following day (paid on day IN)
- Flexible Shift Schedules (9999 Patterns can be Created)
- Monitor Tardiness
- Calculates Hours Worked by Rate
- Auto Process Transactions
- Modify Clockings and Hours
- Custom Report Layouts
- Transaction Reports
- Summary Reports (Late, Early Departure, Absenteeism, Break Time)
- Output to Payroll (requires regional customization)

# VIRDI FingerScan-D



VIRDI FingerScan-D

# VIRDI AC-1000



VIRDI AC-1000



GOOD DESIGN  
AWARD IN KOREA

## Key features

### VIRDI FingerScan-D

- Fingerprint type > Single/dual fingers, Plain/roll, dual flat
- Dimension > Width : 110.0 mm, Length : 195.9 mm, Height : 67.0 mm, include Top lens : 84.7 mm
- Platen Size : 47 mm x 47.3 mm
- Rolled Fingers > 42mm x 42mm / 800x 750 pixels ID Flats > 42mm x 42mm / 800 x 750 pixels
- 500dpi with 256 Gray Level
- FBI IQS IAFIS Image quality Specification Appendix F, GA, KCC, CE, FCC
- USB 2.0
- -20° to + 50° C, Relative Humidity, non-condensing
- Window 7, xp, 2000
- Driver USB 2.0, Software Development Kit, WSQ compression, JPEG2000 compression

### VIRDI AC-1000

- Good Design Award
- User Capacity 15,000
- Log Capacity 17,000
- Card Reader Option : 125KHz EM, 13.56MHz Mifare / DESFire
- TCP/IP, RS232, RS485, Wiegand

# VIRDI FM-30FP



Evaluation Kit

FM-30FP

# VIRDI FAS02NLC



FAS02NLC

## Key features

### VIRDI FM-30FP

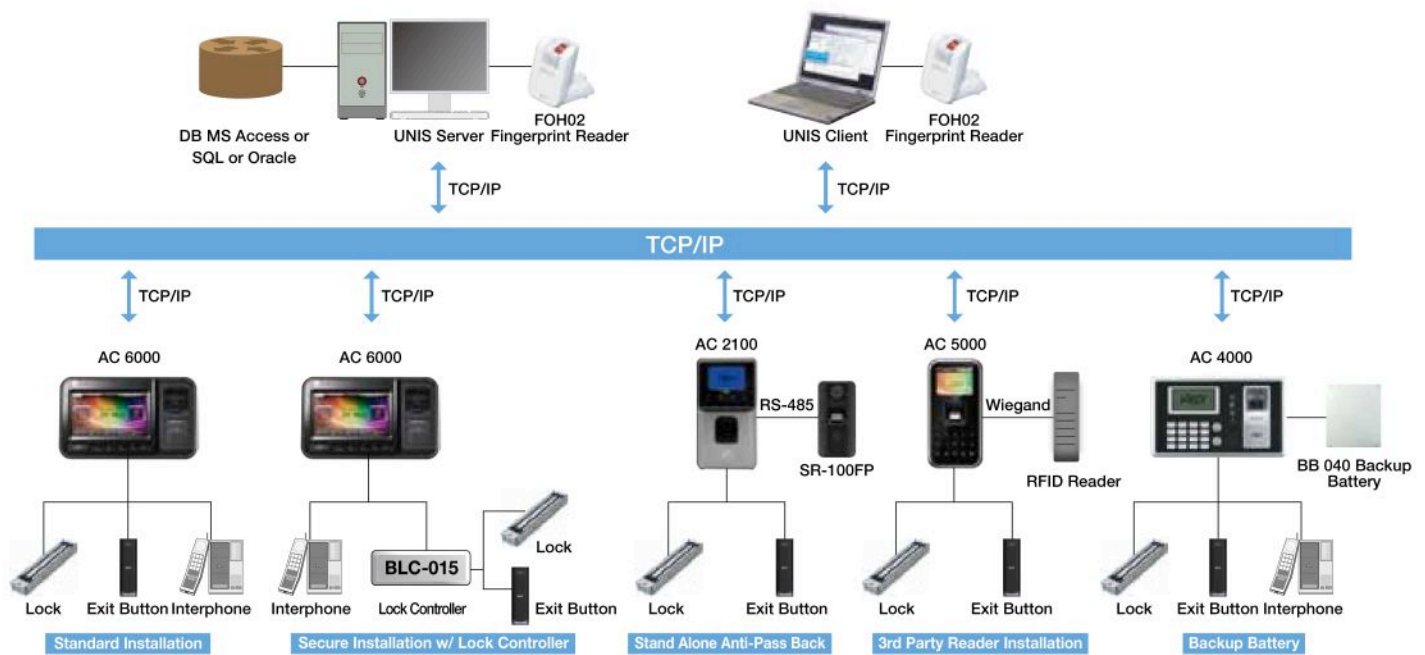
- Patented Fake Finger Detection
- 500dpi Durable Optical Sensor
- Image Size 304 x 344 pixels
- Sensing Area 15 x 17mm
- Windows Size 16 x 19.6
- Template Capacity 10,000
- Programmable I/O (4 Input, 8 Output)
- RS 232, RS 232 (TTL Level), RS 485
- FVC Top Ranking Algorithm as of Dec 2011
- NIST Certified Template Format (ANSI-378 / ISO19794-2)
- Transaction Log 12,280

### VIRDI FAS02NLC

- Patented Fake Finger Detection
- All in one (Compact type)
- Cost Effective
- 500dpi Durable Optical Sensor
- Image Size 304 x 344 pixels
- Sensing Area 15 x 17mm
- Template Capacity 1,000
- Windows Size 16 x 19.6
- RS 232 (TTL Level)
- FVC Top Ranking Algorithm as of Dec 2011
- NIST Certified Template Format (ANSI-378 / ISO19794-2)
- Transaction Log 12,280



# System Configuration



# Terminal Specifications



Model		AC-F100	AC 6000	AC 5000	AC 4000	AC 2100	AC 1000	SR-100FP
Type		Biometric	Biometric	Biometric	Biometric	Biometric	RFID	Biometric
Weatherproof		IP 65	No	IP 65	No	IPX 3	No	No
Memory	MAX Users	1,000	100,000	20,000	22,000	100	15,000	N/A
	MAX Fingers	1,000	100,000	20,000	22,000	200	N/A	N/A
	Transaction Log	1,000,000	500,000	61,000	55,000	5,000	17,000	N/A
	Photo Log	10,000	12,500	N/A	N/A	N/A	N/A	N/A
Communication	To Management Software	Wi-Fi (TCP/IP)	TCP/IP	TCP/IP	TCP/IP	TCP/IP	TCP/IP	N/A
	Other	No	USB	No	No	No	No	Yes
	Wireless (Optional)	Yes (Standard)	Yes	No	No	Yes	No	N/A
To 3rd Party Devices	Wiegand	Yes	Yes	Yes	Yes	Yes	Yes	N/A
	RS 232	No	Yes	Yes	Yes	Yes	No	N/A
	RS 485	Yes	Yes	Yes	Yes	Yes	Yes	Yes
From 3rd Party Devices	Wiegand (26bit, 34bit)	No	Yes	Yes	Yes	Yes	Yes	N/A
Display	LCD	No	Colour TFT Touch LCD	Colour TFT LCD	Mono Graphic LCD	Mono Graphic LCD	Mono Graphic LCD	No
	Size	N/A	4.8" 800 x 480	320 x 240	128 x 64	128 x 64	128 x 64	N/A
	Backlight	N/A	Yes - With Motion Sensor	Yes	Yes - With Motion Sensor	Yes	Yes	N/A
Built-in Camera		Yes	Yes	No	No	No	No	No
Card Reader	RFID, 125KHz - EM 4100	Yes	Yes	Yes	Yes	Yes	Yes	Yes
	HID	Yes	Yes	Yes	Yes	No	No	No
	Mifare	Yes	Yes	Yes	Yes	Yes	Yes	Yes
	DESFire	Yes	Yes	Yes	Yes	Yes	Yes	Yes
Mifare Template Stored on a Card	Yes	Yes	Yes	Yes	Yes	N/A	Yes	
Key Pad		Touch Keypad	Touch Screen	Touch Keypad	Yes	No	Yes	No
Auto Scan		Yes	Yes	Yes	Yes	Yes	Yes	Yes
Door Phone Interface		No	Yes	No	Yes	No	No	No
Function Keys		Yes - 4	Yes - 60	Yes - 4	Yes - 4	Yes - 4	Yes - 4	No
Sensor Type		Optical	Optical	Optical	Optical	Optical	RFID	Optical
Sensing Area		15 x 17 mm	15x17 mm	15 x 17 mm	13 x 15 mm	15 x 17 mm	N/A	15 x 17mm
Resolution		500 dpi	500 dpi	500 dpi	500 dpi	500 dpi	N/A	500dpi
Verification	1:1	< 0.5 sec	<0.5 sec	<0.5 sec	<1 sec	<1 sec	N/A	<1 sec
Identification	1:N (1000)	< 1 sec	<1 sec	<1 sec	<1 sec	<1 sec	N/A	<1 sec
Dimension (W) x (H) x (D) in mm		68 x 138 x 37	198 x 120 x 40	88 x 175 x 43.5	181 x 109 x 47	93 x 170 x 40	140 x 89 x 28	55.5 x 111 x 40.5
Support Slave Reader (SR-100FP)		No	No	Yes	Yes	Yes	No	N/A
FRR / FAR		0.1% / 0.0001%	0.1% / 0.0001%	0.1% / 0.0001%	0.1% / 0.0001%	0.1% / 0.0001%	0.1% / 0.0001%	0.1% / 0.0001%



**UNIONCOMMUNITY Co., Ltd.**  
 5F, Hyundai Topics Bldg., 44-3, Bangi-dong, Songpa-gu, Seoul, 138-050 KOREA  
 Tel : +82-2-6488-3062 Fax : +82-2-6488-3097 E-mail : sales@unioncomm.co.kr  
 www.virditech.com