

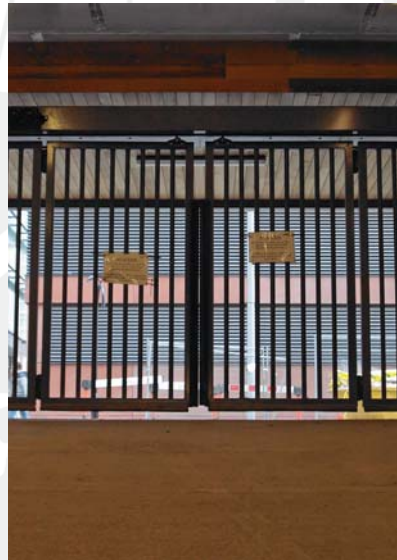


# Gates

For smooth and reliable access control

From  Bishopsgate

**GUNNEBO**  
For a safer world®



From



Bishopsgate

# Gunnebo

## The Complete Solution



### PRODUCT OVERVIEW

Gunnebo UK is a member of the Gunnebo Group, one of Europe's leading security organisations with an unrivalled breadth of products and expertise.

We manufacture, install and service a wide range of physical security products, aimed at protecting sites that are at risk of criminal or terrorist attack.

Leading organisations in Banking, Retail and other high risk sectors like Government, Power and MOD rely on Gunnebo to offer a complete solution to their site protection needs.

### Products and Services

This brochure is intended to give you a brief overview of some of the specialist products and services that Gunnebo offers. Whether you wish to secure your sites outer perimeter or provide secure areas within your building, Gunnebo has the products and expertise to help:

- Fully accredited product portfolio
- Design capability to help you select the most appropriate solution
- Professional, experienced project management teams with specialist knowledge of demanding site conditions
- Specialist installation teams used to working in disciplined and challenging environments
- After sales support with extended warranty to maintain our products to the highest standards

Safes, fences, gates, bollards, electronic tagging, security doors, secure ATM pods, entrance products..... ■

worldwide leader  
in integrated  
security solutions

From



Bishopsgate



# Gates

Protecting entrance and exits against unauthorised vehicle and pedestrian access is essential for successful perimeter security. Applicable to a wide range of environments our gates provide high-level security for

entrances with extensive widths. Irrespective of the width required, openings are always successfully protected against intrusion.

## Product range includes:

- Hinged, Bi-folding, Pedestrian, Truckstopper
- Sliding Gates: Aluminium Cantilevered, Cantilevered, Tracked, Special Telescopic/Lowering

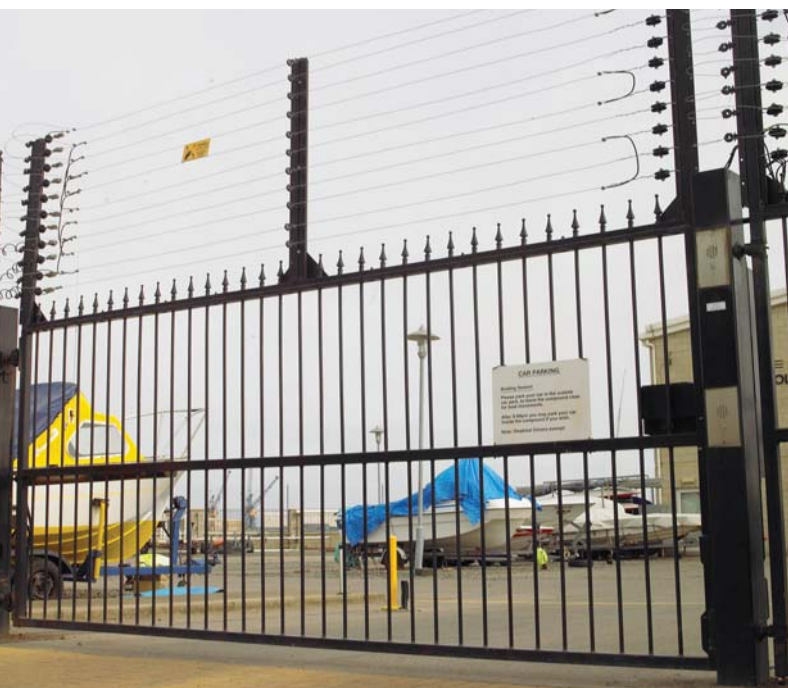
## Typical customers include:

- Military Bases
- Embassies
- Logistic Centres
- Government Premises
- Utility Companies
- National Infrastructure
- Airports
- Retail Environments
- Industrial Units
- Car Parks
- Commercial Properties

From



Bishopsgate



# Gates

Our gate solutions are the perfect blend of high grade steel construction, quality locking, variable operational modes and multiple control options. As always, our standard product offering can be customised to meet your security and design requirements. For example, infilling, double gates, additional controls and bespoke designs can all be supplied upon consultation.



Hinged  
Bi-Folding  
Pedestrian  
Truckstopper

Sliding Gates:  
Aluminium  
Cantilevered  
Cantilevered  
Tracked  
Special  
Telescopic/Lowering





## Hinged

Gunnebo hinged gates provide access protection for small, medium and large openings against unauthorised pedestrian and vehicle entry.

### Key Features and Benefits

- Ideal for openings up to 8m in single leaf form, 16m in double leaf form
- Constructed from high grade steel
- Tested and certified to European safety standards
- High quality locking facilities housed into frames
- Powered or manual operation
- Steel components galvanised to DIN EN ISO 1461
- Supplied with multiple control options
- Can be integrated into existing security systems
- Can be customised with infilling and additional control options
- An extensive range of powder coated colour finishes available



## Bi-Folding

Gunnebo bi-folding gates provide access protection for openings up to 14m against unauthorised pedestrian and vehicle entry.

### Key Features and Benefits

- Ideal solution when swing back is restricted as the arc is reduced by 50%
- Constructed from high grade steel
- High quality locking facilities housed into frames
- Steel components galvanised to DIN EN ISO 1461
- Can be customised with infilling
- An extensive range of powder coated colour finishes available
- Powered (8m) and manual operation (14m)
- Tested and certified to European safety standards (powered only)

From



Bishopsgate



## Pedestrian

Gunnebo's hinged or sliding gates provide access protection for small openings against unauthorised pedestrian entry.



### Key Features and Benefits

- Constructed from high grade steel
- Tested and certified to European safety standards
- High quality locking facilities housed in frames
- Motorised or manual operation
- Steel components galvanised to DIN EN ISO 1461
- Supplied with multiple control options or be integrated into existing security systems
- Can be customised with infilling and additional control options
- An extensive range of powder coated colour finishes available
- Suited to a variety of environments

## TruckStopper

The Truckstopper is the ultimate sliding gate system. It is specifically designed to stop all threats, from pedestrians to speeding trucks.

### Key Features and Benefits

- Bi-directional impact protection
- Capable of high speed opening and closing times
- Capable of variable opening and closing speeds of up to 1 metre per second
- Array of sophisticated safety devices included - affecting a complete stop within 300mm from full speed operation
- Unaffected by road crowns, kerbs or falls for drainage on roads
- Tested to DOS K12 certification
- Fully compatible with all access control systems
- An extensive range of toppings available to suit property requirements



From



Bishopsgate





## Sliding Gates: Aluminium Cantilevered

Our Aluminium Cantilevered have been carefully designed to blend harmoniously into modern environments with powerful architectures. Attractive stainless steel look, silver-coloured eloxal coatings and various RAL-based powder coatings extend the design possibilities available.



### Key Features and Benefits

- The patented design of the gate leaf results in perfect, permanently static and dynamic shape stability
- Exceptional long service life
- Fitted with tried and tested drive technology and is a state-of-the-art development
- Its verified strict safety standard corresponds to the European EN 12453 standard
- Satisfies the European EN 13241-1 standard
- Maximum spacing between bars is 100mm
- Safety edges and rollers integrated in the gate leaf blend harmoniously
- Quick and rational on-site installation
- Smooth and quiet operation
- Up to 10m opening
- Powered and manual operation



## Cantilevered

By being continually enhanced, Gunnebo sliding gates satisfy the requirements of increased security needs and individual design wishes. The Gunnebo range extends from simple manually-operated sliding gates to electronically controlled gate systems. Gunnebo sliding gates are characterised by the fact that they are very simple to assemble, which allows the system to be fitted easily and quickly.

All gate systems are pre-assembled in the factory and their functions are checked. They are then supplied to the construction site in full and installed.

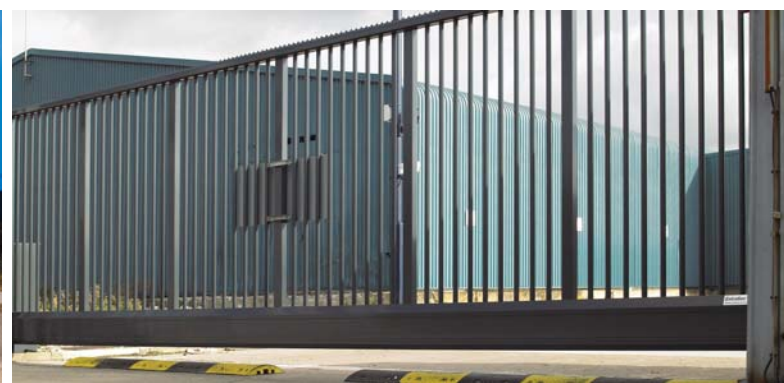
### Key Features and Benefits

- EN 13241-1 approved
- Optional gate infills
- Tested security
- Corrosion protection conforming to DIN EN ISO
- Extremely low maintenance
- Smooth, silent and fast operation
- No tracks in road surface
- Gate frame produced as statically calculated single-wing design

From



Bishopsgate





## Tracked

Gunnebo's tracked sliding gates satisfy the requirements of increased security needs and individual design wishes. Gunnebo gates on track are characterised by the fact that they can accommodate very large openings and/or non standard heights and infills. Install on-site is not as quick and easy as cantilever gates due to increased foundation requirements but the reduced runback requirement can prove advantageous.



### Key Features and Benefits

- Easy installation
- Simple handling
- Large opening widths
- Corrosion protected track
- High level of security
- Corrosion protection offered by galvanising and coating using the tri-protect procedure

## Special Telescopic/Lowering

When a special adaptation or a very restrictive run back area is called for the telescopic gate is the logical choice. We are fairly unique in that we can offer these in both tracked or Cantilever models.

### Key Features and Benefits

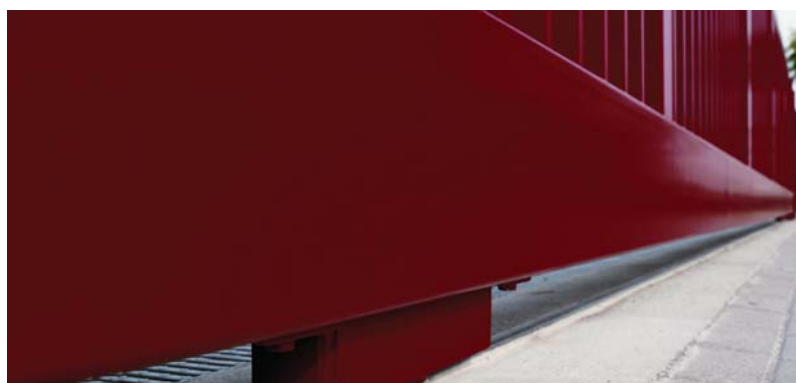
- Adaptability to customer needs
- Easy Installation and service ability
- Up to 16m opening widths
- Gate frame produced as statically calculated single-wing design
- Covered and therefore protected drive and security technology
- Corrosion protection offered by galvanising and coating



From



Bishopsgate









# Planning, Installation and After Sales Service



## Planning and Installation

Our teams are available to help you at every stage of your project – from design, specification and cost planning through to determining a flexible installation schedule. Once a schedule is agreed, all products will be carefully delivered and expertly installed by trained Gunnebo installers. First class workmanship is assured, as is prompt completion within the contracted timescales.

## After Sales Service

When your project is completed and our products are installed, we have a dedicated team of service engineers available to maintain your products nationwide. Working with our customer support advisors they ensure you receive 24/7 backup should a problem ever arise.

Planning, products, installation, back-up...the Complete Service, exclusively from Gunnebo. It's our commitment, and your guarantee of total peace of mind.

worldwide leader  
in integrated  
security solutions

From



Bishopsgate

## Other products in the Gunnebo range include -



### Fencing

A wide range of advanced fencing products that combine the highest quality, strength and durability to offer protection in any domestic or high security situation.



### Vehicle Control

A wide range of barriers, bollards and road-blockers, manufactured to uncompromising standards to provide optimum site protection.



### Entrance Control

Low and full height products, manufactured to the highest specification, designed to balance optimum security with smooth traffic flow.



### Staff & Cash Security

Screens and counters of unrivalled quality deliver outstanding protection, while our tills and cash handling equipment offer a wide choice of designs and optional features.



### ATM Protection

Comprised of self-contained, compact enclosures, doors and walling systems, the range provides exceptional ballistic and physical protection.



### Security Doors

Our feature-packed doors combine high quality specification construction with high-security locking to resist both physical and ballistic attack.



### Secure Walling

Flexible modular walling for partitioned or stand-alone structures that is strong, compact, cost effective and quick to install. Available in a choice of colours and finishes.



### Safe & Vault Equipment

Featuring the most reliable brands, Chubb safes, Rosengrens and SecureLine, the range includes graded and non-graded safes, vault rooms, doors and safe deposit lockers.



### Retail Electronics

Electronic Article Surveillance (EAS) products to tag merchandise in store and "SafePay™" an automated system that relieves staff of cash handling responsibilities.



### Banking Automation

State-of-the-art products, packed with quality features, that ensure depositing and withdrawing cash or takings is fast and convenient – 24/7.



### Interlocks & Automation

A range of interlocking doors that can be integrated with other security systems to deliver the degree of protection for people and assets required.

For further information, please contact:

Gunnebo UK Limited, PO Box 61, Woden Road,  
Wolverhampton WV10 0BY, United Kingdom

Phone: +44 (0) 1902 455111 Fax: +44 (0) 1902 351961

Email: [marketing.uk@gunnebo.com](mailto:marketing.uk@gunnebo.com)

Website: [www.gunnebo.co.uk](http://www.gunnebo.co.uk)



**Bishopsgate Int (Nig) Ltd**

52a Campbell Street

Lagos Island CBD

Lagos State 100221

Tel. +234 (700) 247-4677-4283

Email: [sales@bishopsgate-nq.com](mailto:sales@bishopsgate-nq.com)

Web: [www.bishopsgate-nq.com](http://www.bishopsgate-nq.com)