



# ClearSec

## Manual Full-Height-Turnstile for Internal and Semi-External Installation\*

ClearSec is a robust and elegant full height tripod turnstile available in many configurations: from model T with full stainless steel construction, roof, glass panel infill, tubular rotor assembly with column in painted mild steel; further enhanced by a slatted acrylic rotor with column clad in stainless steel (model SL), up to model FP with polycarbonate full panel rotor wings and a pressure mat for unauthorised detection in the dead area. All models include direction red-green status lights.

Delivered in a kit form, it is easily transported to the installation site. Available in single and double layout configurations.

Available with three (120°) rotor elements for more passage clearance or four (90°) rotor elements for increased security.

Passage in both directions is electronically controlled. ClearSec offers a standard electromechanical head to prevent two passages at one time, equipped with damper for a silent mechanism and smooth operation.

In the event of an emergency or power-off scenario, the unit can be configured fail-safe i.e. rotor freely rotates or fail-lock i.e. rotor locks. This option is available either in one or both directions of passage.

\*Semi-external installation allowed for ClearSec T only, under canopy

From



Bishopsgate

**GUNNEBO**  
For a safer world®

# ClearSec

## Technical Specifications

### Drive

Hand operated. Logic Voltage 24Vac

### Materials

Casework:	304 grade grained stainless steel
Glass Infill:	6.4mm 3ply laminated glass panels
Rotor Arms(T / SL / FP):	316 grade satin polished stainless steel / 20mm-thick acrylic slats / Full length 9.5mm-thick solid polycarbonate panel
Rotor Column (T / SL and FP):	Tubular mild steel, painted textured polyester powder top coat, black RAL9005 / Clad in grained stainless steel 304 for models SL and FP

### Mechanism

Electro-mechanical head mechanism:

- Positive action lock to prevent two passages at one time
- Self-centring mechanism to ensure complete rotation in the rest position
- Anti-backup device to prevent reverse rotation once the head moved 30° from rest position
- Hydraulic damper to ensure smooth and quiet operation

### Power Failure / Fire Alarm

The rotor wings remain locked in the fail-lock configuration (not recommended for FP model to not trap people in the dead area) or can freely rotate in the fail-safe configuration. Fail-Lock or Fail-Safe configuration is available in one or both directions and must be specified at time of order placement. Note that head mechanism fail state will be the same as power failure choice. Input facility available for voltage-free contact to effect fire alarm fail state (Option COMR1 required)

### Interface

LCM02 microprocessor control logic:

- One input for opening/locking the mechanism in each direction
- Two protected outputs for control of the opening/locking solenoids
- Four protected outputs for piloting way mode indicators
- Two 0V output relays indicating availability of use in either direction
- Two 0V outputs to count passage in either direction
- Adjustable time out via parameter change: i.e. Go signal is cancelled if the passage is not completed within a preset time (standard default 8sec)

### Power supply / Power rating

230Vac 50Hz or 115Vac 60Hz / Power Rating 50VA. 50+50VA for Double unit

### Operating Temperature / IP Rating / MCBF / MTTR

0 to 45°C (RH95% not condensing) / IP30 / 1.5M cycles / less than 30min

### Flow Rates (approximate figures)

- Insertion Type Reader, 12 passages per minute
- Swipe Type Reader, 15 passages per minute
- Proximity Reader "Hands Free", 17 passages per minute

### Models or Versions

- ClearSec T90
- ClearSec T120
- ClearSec SL90
- ClearSec SL120
- ClearSec FP90
- ClearSec FP120

All units are available in Single (S) or Double (D) version

### Options

- Card reader integration
- 316 stainless steel casework
- Push button console
- Remote console
- Demountable roof fascia
- COMR1 interface
- RS485 serial interface
- 316 stainless steel trombone rotor arms
- Stainless steel solid infill panels (replacing glass panels)

### Applications

- Government
- Retail
- Finance
- Telecommunications
- Information Technology
- Banking
- Publishing
- Leisure
- Petrochemicals
- Education

From



Bishopsgate

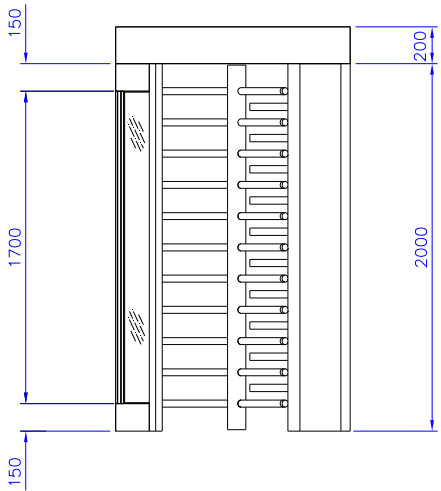
**GUNNEBO**  
For a safer world®

# ClearSec

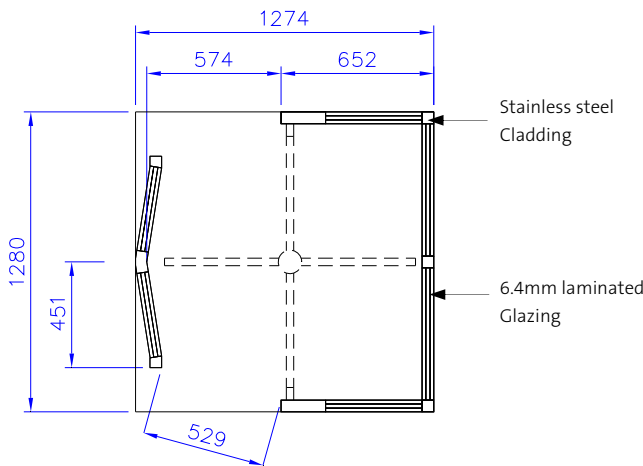
## Site Preparation: ClearSec Single Unit (S)

Product delivered in kit form and requires lifting equipment. Approx. Weight 520Kg  
(For installation details, please refer to installation layout drawings)

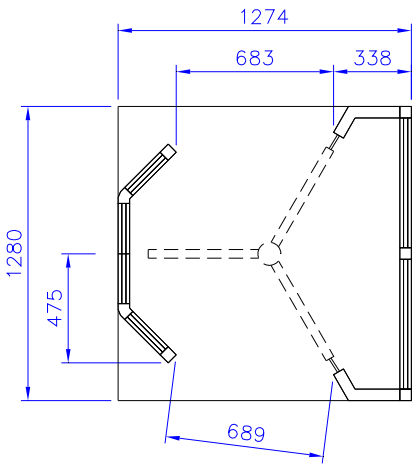
ClearSec T / SL / FP -S Height



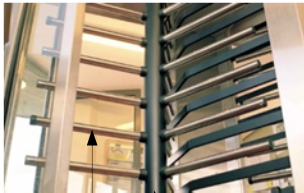
ClearSec T / SL / FP 90-S Footprint



ClearSec T / SL / FP 120-S Footprint



ClearSec T Rotor



Straight bar rotor  
Mild steel black painted column

ClearSec SL Rotor



20mm-thick acrylic slot.  
Mild steel column, clad in grained stainless steel

ClearSec FP Rotor



9.5mm-thick solid polycarbonate panel

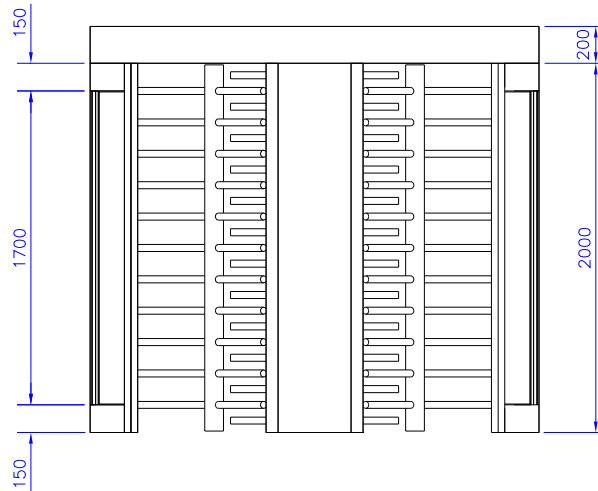
Concrete Base to specification at least fck (cube) 300N/mm<sup>2</sup> of resistance  
Base to be flat and level to +/- 5mm over footprint area. Dimensions to be > 1450 x 1450 x 150 deep min (units in mm)

# ClearSec

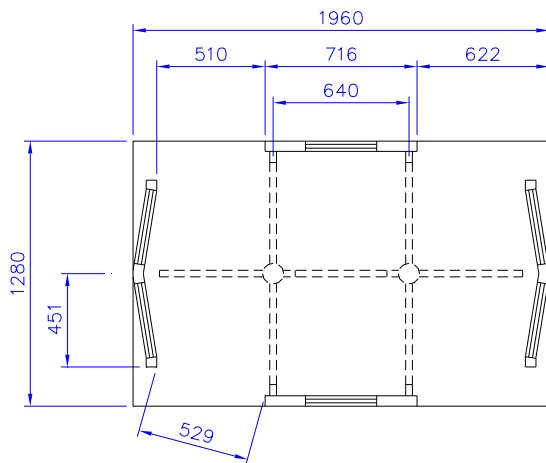
## Site Preparation: ClearSec Double Unit (D)

Product delivered in kit form and requires lifting equipment. Approx. Weight 890Kg  
(For installation details, please refer to installation layout drawings)

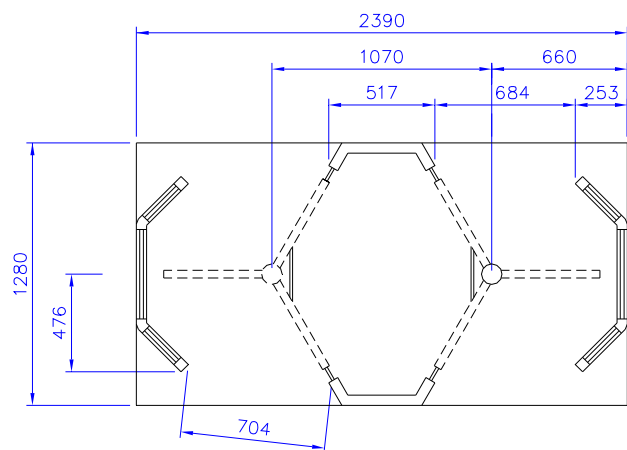
ClearSec T / SL / FP -D Height



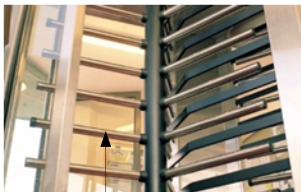
ClearSec T / SL / FP 90-D Footprint



ClearSec T / SL / FP 120-D Footprint



ClearSec T Rotor



Straight bar rotor  
Mild steel black painted column

ClearSec SL Rotor



20mm-thick acrylic slot.  
Mild steel column, clad in grained stainless steel

ClearSec FP Rotor



9.5mm-thick solid Polycarbonate panel

Concrete Base to specification at least fck (cube) 300N/mm<sup>2</sup> of resistance

Base to be flat and level to +/- 5mm over footprint area. Dimensions to be > 1450 x 2500 x 150 deep min (units in mm)

# ClearSec

## Important

- Any horizontal pipe or conduit running below the ClearSec must be at least 140mm below FFL
- Metal conduit for cables should be raised at least 50mm from foundation
- It is the customer's responsibility to ensure the structural integrity and strength of the installation location
- The dimensions given and the pictures shown in this Product Data Sheet are for information only. In order to prepare the installation site, please refer to your usual Gunnebo Customer Service contact



**Bishopsgate Int (Nig) Ltd**  
 52a Campbell Street  
 Lagos Island CBD  
 Lagos State 100221

Tel. +234 (700) 247-4677-4283  
 Email: [sales@bishopsgate-nq.com](mailto:sales@bishopsgate-nq.com)  
 Web: [www.bishopsgate-nq.com](http://www.bishopsgate-nq.com)

Note: In pursuit of its policy of continuous refinement and improvement, Gunnebo Competence Centre Entrance Control reserves the right to modify design and details at any time and without notice.



**GUNNEBO**  
 For a safer world®